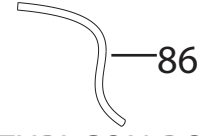
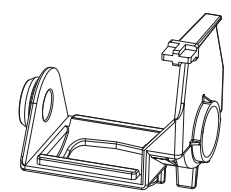
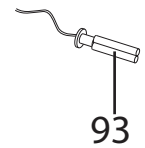
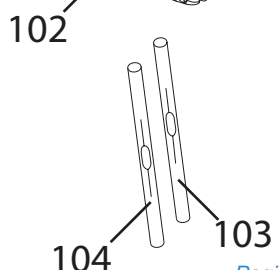
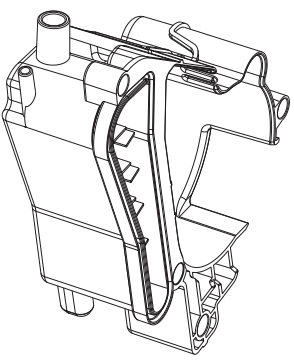
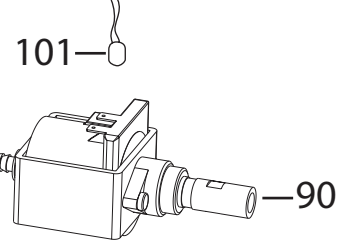
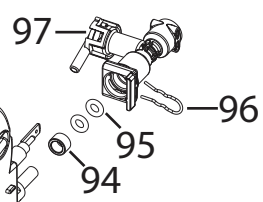
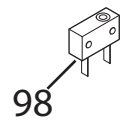
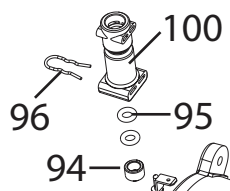
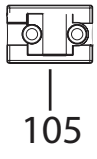
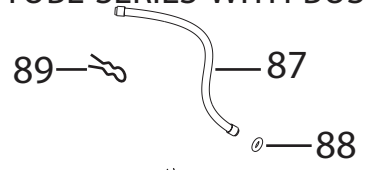


85
SERIE TUBI
TUBE SERIES



SERIE TUBI CON BOCCOLE
TUBE SERIES WITH BUSHES



| Posizione | Codice | Descrizione |
|-----------|--|--|
| | 533135 | O-RING |
| | 5032111900 | CAVO ALIMENTAZIONE |
| | 5313256701 | COPERCHIO GENERATORE NERO(PA) ECAM510 |
| | 5332224100 | CINGHIA MOTORE MACININO |
| | 5513211891 | PENNELLO-RASCHIETTO+SETOLE NERO(PP) ECAM |
| | 6113210111 | STAFFA TCO(ACC.C70) (GENERATORE) ECAM |
| | 6113210121 | STAFFA |
| | IT0198 SEE TECNICAL INFORMATION IT0198 | RICAMBI AGGIUNTIVI SU CHASSIS . VEDI INFOTECNICA IT0198 |
| | IT0198_ SEE TECNICAL INFORMATION IT0198 | RICAMBI AGGIUNTIVI SU CHASSIS . VEDI INFOTECNICA IT0198 |
| | 5313213451 | FERMACAVO |
| | 5313219181 | GUARNIZIONE A SOFFIETTO MACININO |
| | 7313212631 | CARRELLO |
| | 5313213911 | COPERCHIETTO |
| | SER0354 | GRASSO LUBRIFICANTE VERKOFOOD WR2 TUBO 5GR |
| | IT1000 | TERMOMETRO DIGITALE PORTATILE, -50° +150° |
| 001 | 5313221031 | COPERCHIO POLVERE |
| 002 | 5513214851 | COPERCHIO |
| 003 | 7313222201 | ASS. COPERCHIO |
| 004 | 5913212611 | MANOPOLA |
| 005 | 5513222561 | SCHIENALE |
| 006 | 5513217011 | FIANCO SX |
| 007 | 5313219211 | SERBATOIO |
| 009 | 5313213441 | SUPPORTO INTERRUTTORE |
| 010 | 5513217001 | FIANCO DX |
| 011 | 5313251441 | COVER |
| 012 | 7313254561 | TANK |
| 013 | 5313218571 | FRONTALINO |
| 014 | 5313223071 | CASSETTO |
| 015 | 5313218521 | FRONTALINO |
| 016 | 6013211171 | POGGIATAZZE |
| 017 | 5313218581 | VASCHETTA |

| | | |
|------|------------|-----------------------------|
| 018 | 5313222641 | GALLEGGIANTE |
| 019 | 5132112500 | INTERRUTTORE |
| 021 | 5313213551 | VASCHETTA |
| 025 | 7313221141 | ASS. CRUSCOTTO |
| 026 | 5213216011 | SCHEDA DISPLAY |
| 031 | 7313212901 | EROGATORE |
| 033 | 5313217741 | O-RING |
| 035 | 7313218741 | RUBINETTO |
| 036 | 5513222441 | MANOPOLA |
| 037 | 5513214861 | VETRINO |
| 038 | 7313219311 | CAPPUCCINATORE |
| 039 | 5313220031 | O-RING |
| 040 | 5313217751 | O-RING |
| 041 | 5332169300 | TUBO INFERIORE |
| 042A | 5513270219 | TUBETTO |
| 042 | 5513270219 | TUBETTO |
| 047 | 5213219041 | SENSORE REED |
| 048 | 5213218521 | SCHEDA POTENZA |
| 048 | 5213221071 | SCHEDA POTENZA 230V |
| 049 | 532233 | GOMMINO |
| 050 | 5313213841 | FERMO |
| 054 | 7313251451 | INFUSORE CAFFE |
| 058 | 9812631250 | VITE |
| 059 | 6013213181 | FILTRO (TAI-FENG) |
| 060 | 5332139600 | TAPPO |
| 061 | 5332139500 | VALVOLA |
| 062 | 6132112200 | MOLLA |
| 063 | 5332149100 | O-RING |
| 065 | 5313227651 | COPERCHIO |
| 066 | 7313230501 | MACININO COMPLETO |
| 070 | 9812631250 | VITE |
| 071 | 5313213591 | TAPPO |
| 073 | 7313214521 | REGOLATORE |
| 074 | 5313213431 | GOMMINO |
| 075 | 7313248951 | KIT TRASMISSIONE (CHIAPHUA) |
| 075 | 5513228021 | KIT TRASMISSIONE (ECM) |
| 076 | 5213215001 | SCHEDA MOTORE (ECM) |
| 076 | 5213220501 | SCHEDA MOTORE (CHIAPHUA) |

| | | |
|-----|------------|----------------------------------|
| 077 | 5132110500 | MICROINTERRUTTORE |
| 078 | 7313249421 | ASS. MOTORE (CHIAPHUA) |
| 078 | 7313217261 | ASS. MOTORE (ECM) |
| 079 | 5213213971 | SENSORE HALL |
| 080 | 5313243071 | CINGHIA |
| 081 | 5313236711 | TUBO 90° |
| 082 | 5132104100 | MICROINTERRUTTORE |
| 083 | 5332149100 | O-RING |
| 084 | 5313217601 | FILTRO |
| 085 | 5513227961 | MECCANOVALVOLA |
| 086 | 5332199500 | TUBO (SIL NAT)DI=4 DE=8 L=150 |
| 086 | 5313217861 | TUBO DI=3 DE=5,5 L=145 |
| 086 | 5313217871 | TUBO DI=3 DE=6 L=200 |
| 087 | 5513212901 | TUBO PTFE DI2-DE4 L=290 2BOCCOLE |
| 087 | 5513212871 | TUBO PTFE DI2-DE4 L=97 2BOCCOLE |
| 087 | 5513212881 | TUBO PTFE DI2-DE4 L=270 2BOCCOLE |
| 087 | 5513212891 | TUBO PTFE DI2-DE4 L=230 2BOCCOLE |
| 088 | 5313217701 | O-RING D=3,85 |
| 089 | 6132101300 | CLIP |
| 090 | 5113211311 | POMPA |
| 091 | 5513211371 | REGOLATORE |
| 093 | 5213215651 | SENSORE NTC |
| 094 | 5332239300 | DISTANZIALE 5XD5.2XD7.9 NATURAL |
| 095 | 5313217701 | O-RING D=3,85 |
| 096 | 6113210021 | CLIP |
| 097 | 7313219401 | VALVOLA DI SICUREZZA |
| 098 | 5113210211 | MICROINTERRUTTORE |
| 099 | 5213214671 | FLUSSIMETRO |
| 100 | 5332239200 | CONNETTORE |
| 101 | 5213211161 | PROTETTORE |
| 102 | 5513214291 | GENERATORE |
| 103 | 5013251391 | CABLAGGIO TCO |
| 104 | 5013251401 | CABLAGGIO TCO |
| 105 | 5513214661 | CURSORE |